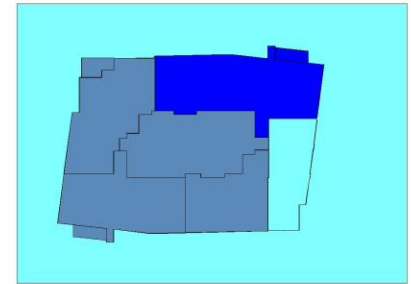
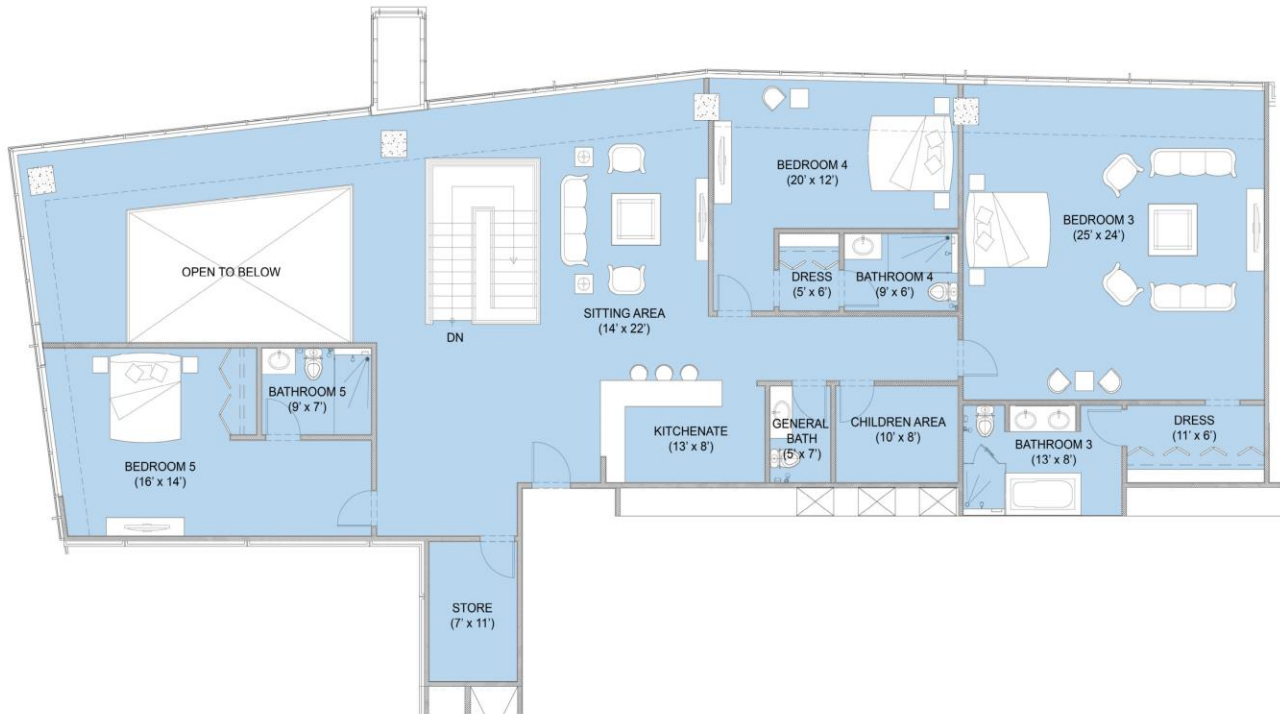


CBK-PT2-24-2404

UPPER LEVEL

PENTHOUSE:- FIVE BEDROOMS + (TYPE L+)
SEA VIEW



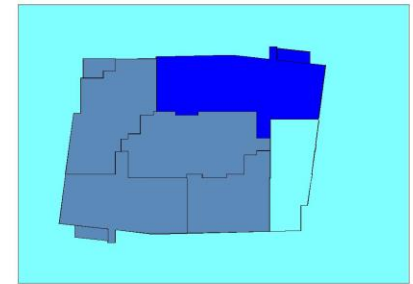
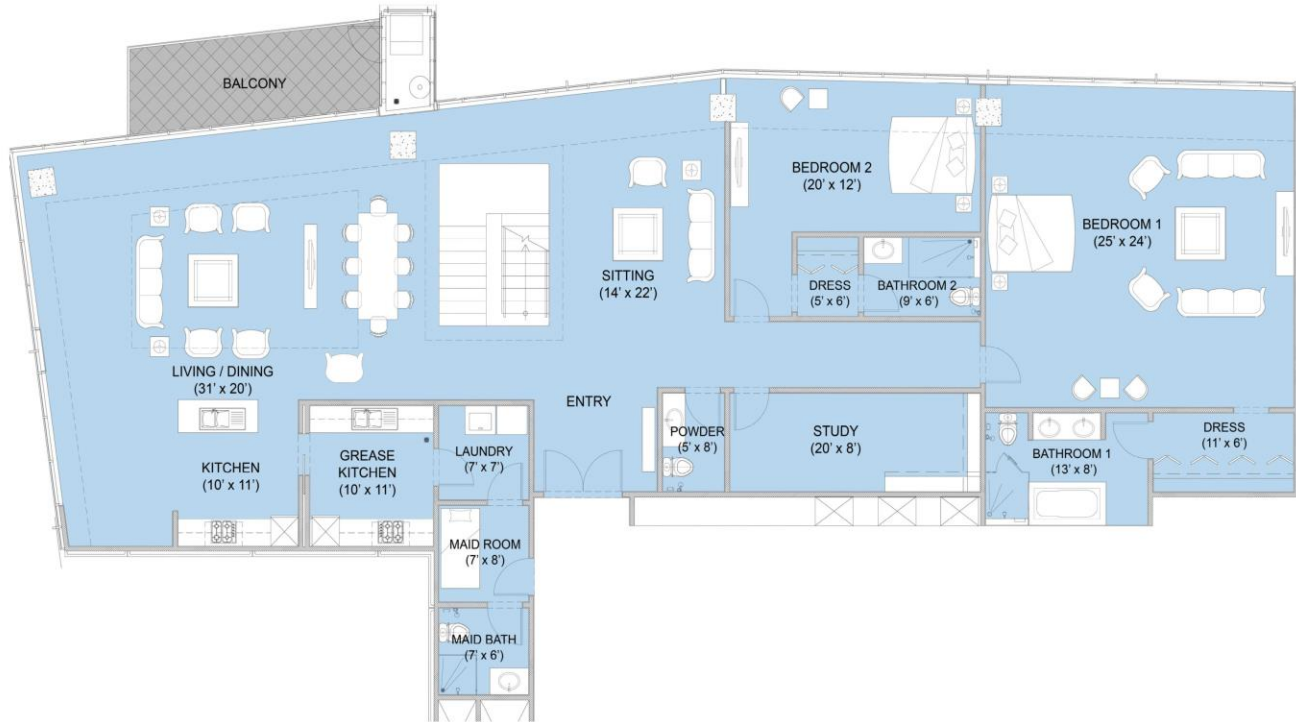
Notes:

1. All dimensions are in feet and are measured to structural elements and exclude wall finishes and construction tolerances.
2. All dimensions have been provided by our consultant architects, and are subject to change.
3. All materials, dimensions & drawings are approximate, information subject to change without notice. Actual useable floor space may vary from the stated floor plan. Drawings not to scale. E&EO.
4. The developer reserves the rights to make revisions.

CBK-PT2-24-2404

LOWER LEVEL

PENTHOUSE:- FIVE BEDROOMS + (TYPE L+)
SEA VIEW



LOWER LEVEL

UNIT AREA:	3,258.00 SQFT
BALCONY AREA	129.05 SQFT
TOTAL AREA:	3,387.05 SQFT
ALLOCATED CORE AREA	872.04 SQFT

UPPER LEVEL

UNIT AREA:	3,068.00 SQFT
ALLOCATED CORE AREA	875.69 SQFT
CAR PARK AREA	750 SQFT
GROSS AREA	8,952.78 SQFT

(3 PARKING BAYS)

Notes:

1. All dimensions are in feet and are measured to structural elements and exclude wall finishes and construction tolerances.
2. All dimensions have been provided by our consultant architects, and are subject to change.
3. All materials, dimensions & drawings are approximate, information subject to change without notice. Actual useable floor space may vary from the stated floor plan. Drawings not to scale. E&EO.
4. The developer reserves the rights to make revisions.